

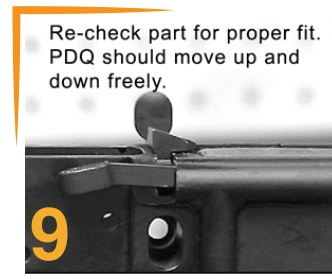
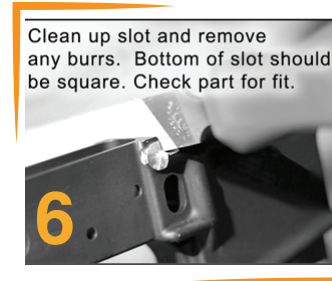
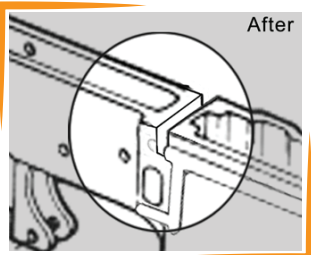
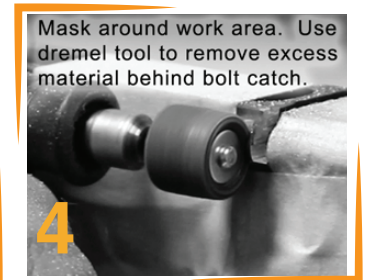
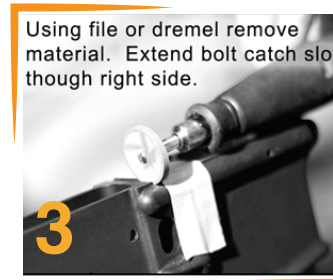
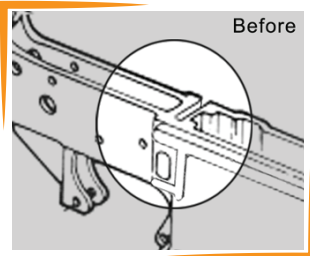
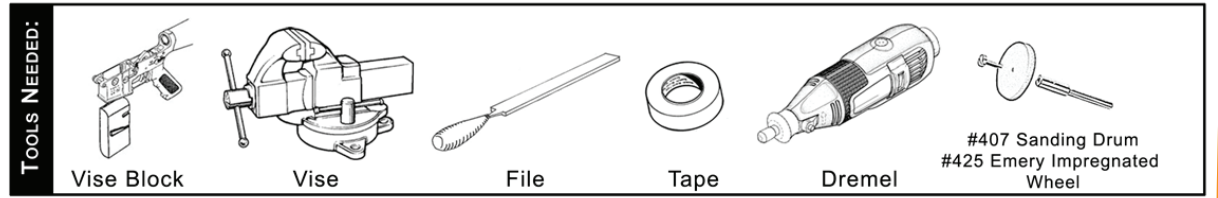


**VIEW FULL INSTALLATION VIDEO AT  
WWW.GUNTOLOGY.COM**



**GUNTOLOGY**

# PDQ INSTALLATION INSTRUCTIONS



## PLEASE READ before beginning installation.

Installation of PDQ is not difficult but does require that you are familiar with the parts and functions of an AR15. Take your time and remove only a small amount of metal at a time. If you feel you cannot install the PDQ yourself take it to a qualified gunsmith or armorer.

### UNLOAD FIREARM BEFORE WORKING

AR-15 Lower Receiver must be completely dissassembled before beginning any work. Diagrams illustrate where metal will be removed of installation of PDQ Bolt Catch. Carefully file or dremel lower until bolt catch slot continues through the right side of the receiver. Remove any excess matal behind the slot that will interfere with bolt catch operation.

DO NOT COPY OR REPRODUCE IN ANY FASHION

THIS IS THE SOLE INTELLECTUAL PROPERTY OF TEAL BRAVO, LLC US PATENT NUMBER 8,359,966B1

# PDQ Ambi-Bolt Release



# PDQ Ambi-Bolt Release



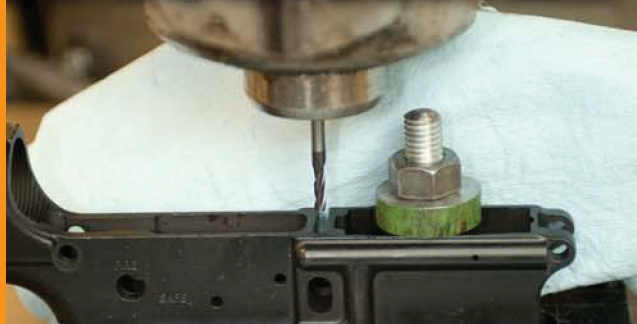
- One Piece Design
- Solid Construction
- Small Footprint
- Easy Installation

# Installation Using Milling Machine UNLOAD FIREARM PRIOR TO WORKING

AR15 Lower Receiver must be completely disassembled before beginning any work. Milling machine installation should be performed by an experienced gunsmith. If you are not familiar with these operations do not attempt. Please take to a qualified gunsmith.

Installation video available online at [www.guntology.com/installation](http://www.guntology.com/installation)

1. 5/32 3 flute high helix carbide end mill for aluminum.



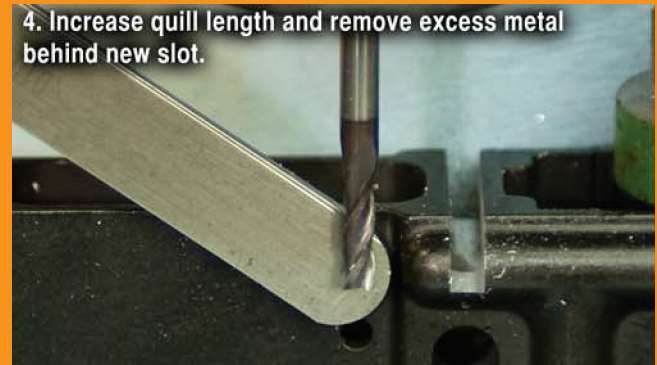
2. Touch off at bottom of bolt stop slot. Set quill depth stop.



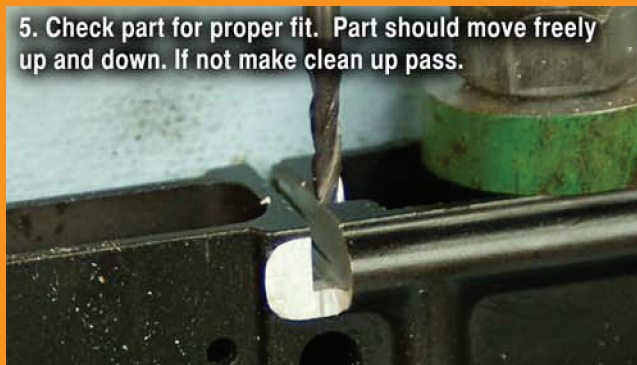
3. Mill slot out through port side (right) of receiver.



4. Increase quill length and remove excess metal behind new slot.



5. Check part for proper fit. Part should move freely up and down. If not make clean up pass.



6. Clean and degrease part. Touch up bare metal with aluminum black.

